

**For Sublease**  
**Industrial Building – Sublease**  
**3787 Spinnaker Court, Fremont**

**FOR SUBLEASE**



**Building Size: +/-15,875 SF**

**15% Office**

**200 amps @ 480 volts**

**200 amps @ 208 volts**

**2 Dock and 1 Grade Level Door**

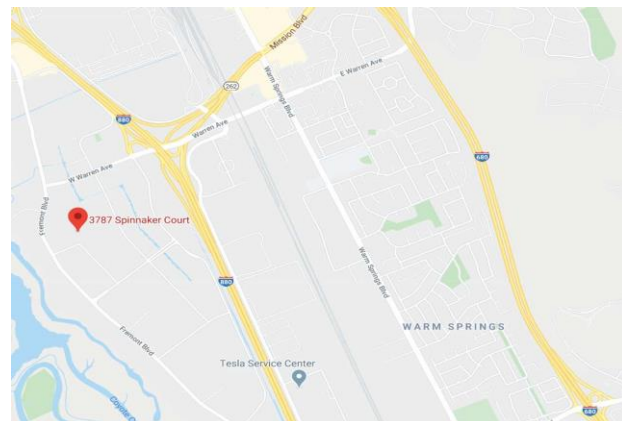
**Yard/Truck Staging**

**22-24' Clear Height**

**LED 11/30/2022**

**Bayside Tech Park**

**Occupied – Please do not disturb occupants**



*For more information, please contact:*

**Kevin Peixoto**

**408-557-0167**

**kevin@kpacommercial.com**

**www.kpacommercial.com**

**Lic. #: 01411086**

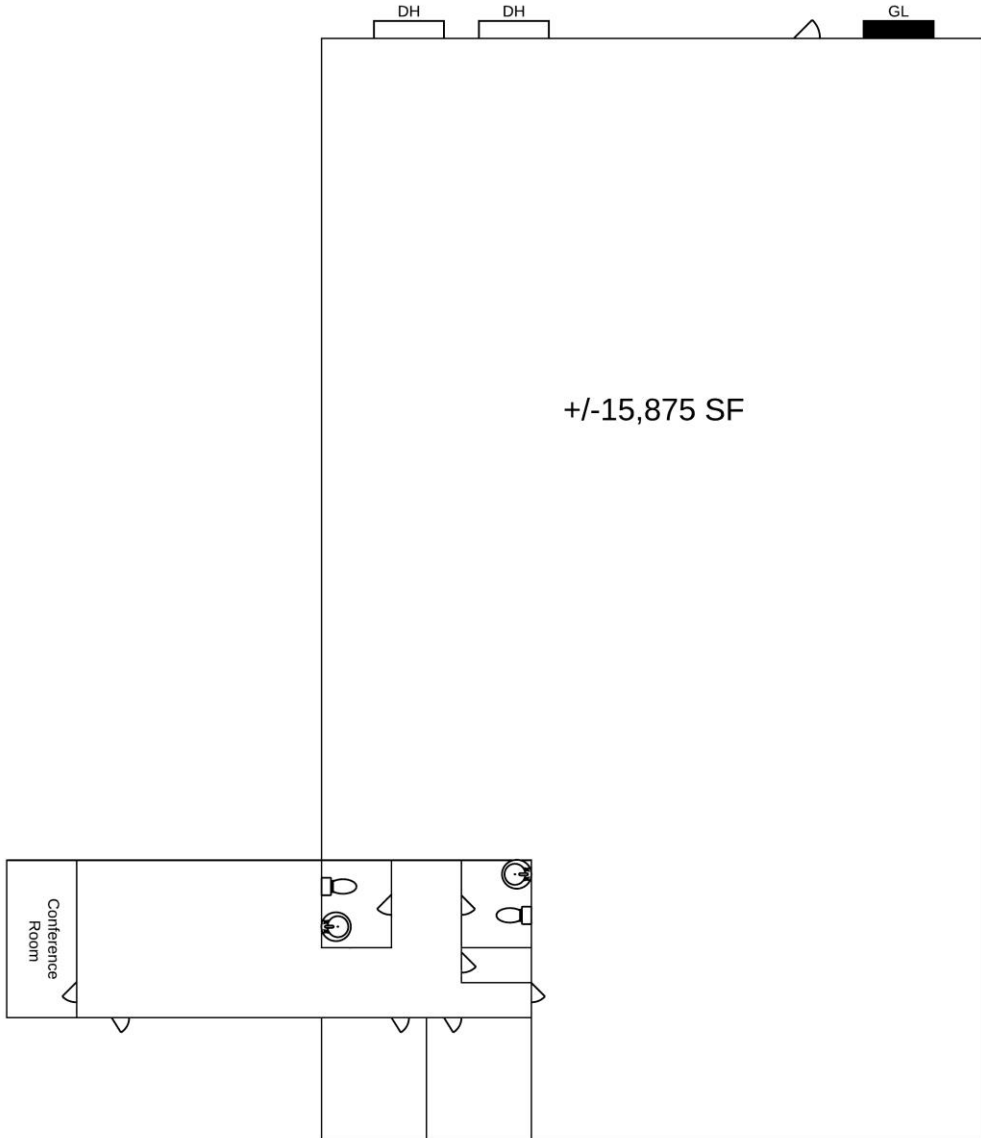
*The information contained herein was obtained from sources believed reliable; however, KPA Commercial, Inc. makes no guarantees, warranties or representations as to the completeness or accuracy thereof. The presentation of this property is submitted subject to errors, omissions, change of price or conditions prior to sale or lease, or withdrawal without notice.*

# For Sublease

## Industrial Building – Sublease

### 3787 Spinnaker Court, Fremont

**FOR SUBLEASE**



*For more information, please contact:*  
**Kevin Peixoto**  
**408-557-0167**  
**kevin@kpacommercial.com**  
**www.kpacommercial.com**  
**Lic. #: 01411086**

*The information contained herein was obtained from sources believed reliable; however, KPA Commercial, Inc. makes no guarantees, warranties or representations as to the completeness or accuracy thereof. The presentation of this property is submitted subject to errors, omissions, change of price or conditions prior to sale or lease, or withdrawal without notice.*